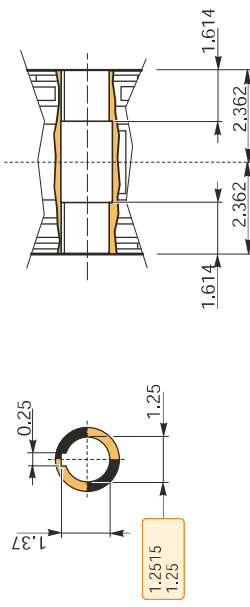
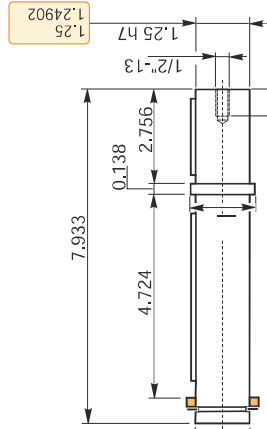
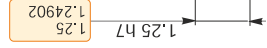
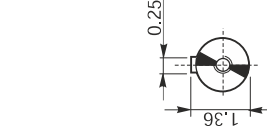
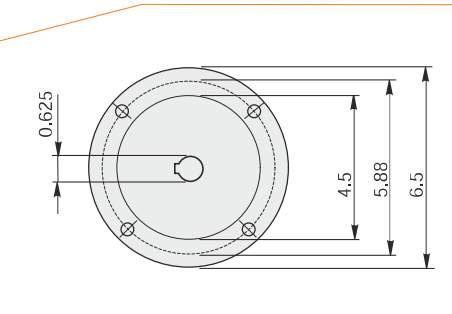
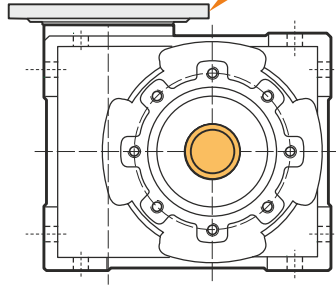
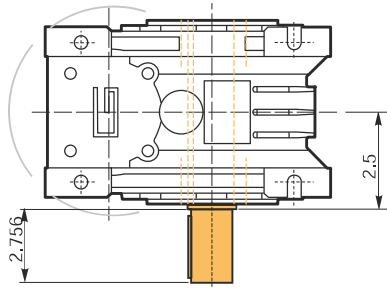
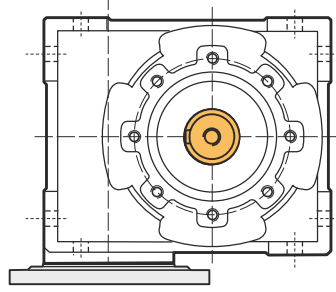


Hollow output shaft

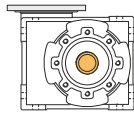




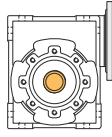
! Output shaft is delivered as loose accessory

Mounting positions

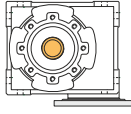
M1 (B3)



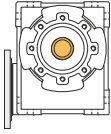
M2 (V6)



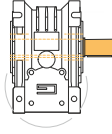
M3 (B8)



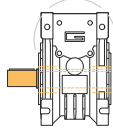
M4 (V5)



M5 (B7)



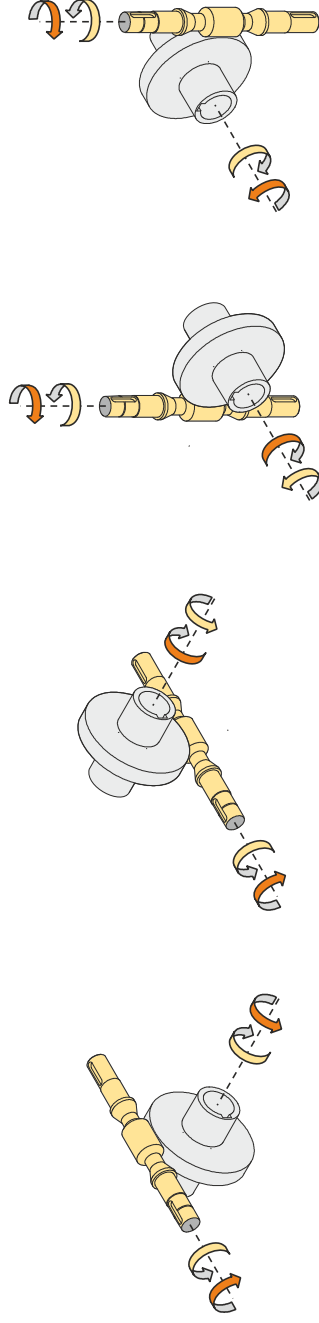
M6 (B6)



Oil quantity [quarts]

Lubricant type: this gear unit is delivered life lubricated

Direction of rotation



Weight

Gear unit [lb]

19.8

Gearing data

Number of starts

2

Lead angle

11° 18'

Pressure angle

20°

Backdriving

Variable static self-locking
Quick back-driving in case of vibrations
Dynamic back-driving