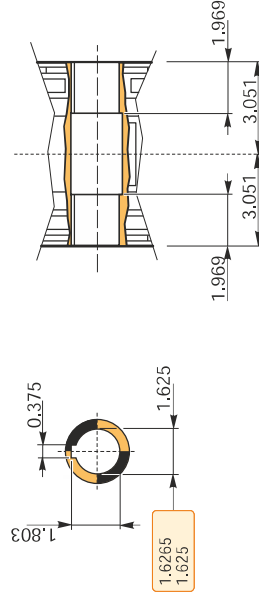
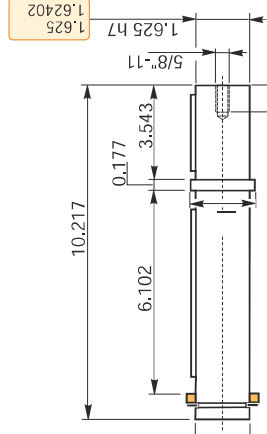
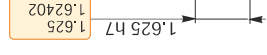
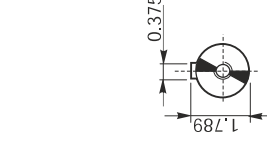
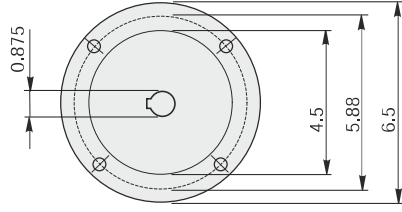
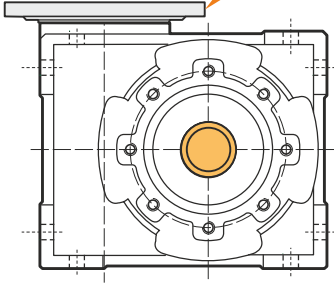
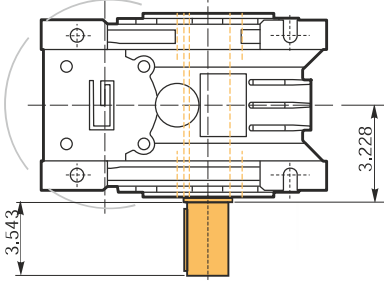
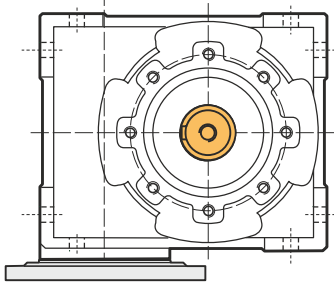


**Hollow output shaft**

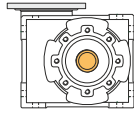




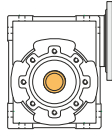
**!** Output shaft is delivered as loose accessory

**Mounting positions**

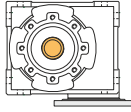
**M1 (B3)**



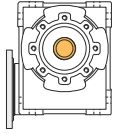
**M2 (V6)**



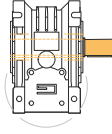
**M3 (B8)**



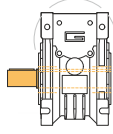
**M4 (V5)**



**M5 (B7)**



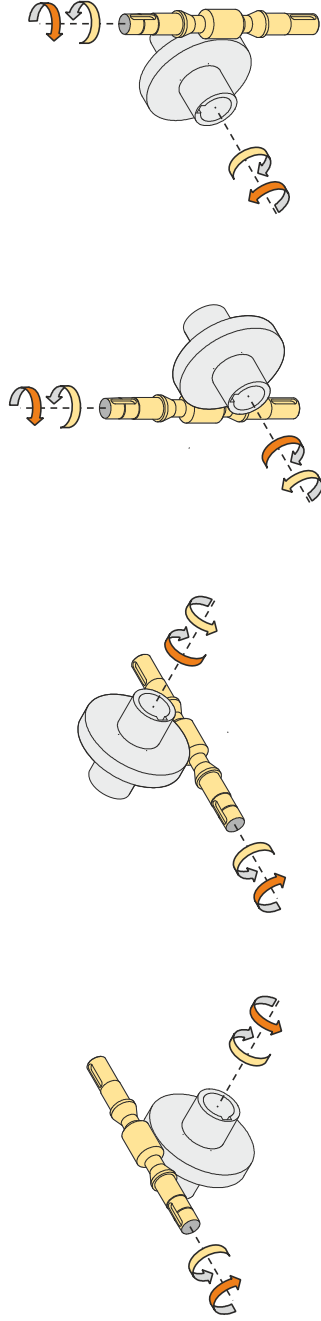
**M6 (B6)**



Oil quantity [quarts]

Lubricant type: this gear unit is delivered life lubricated

**Direction of rotation**



**Weight**

Gear unit [lb]

77.2

**Gearing data**

Number of starts

2

Lead angle

14° 41'

Pressure angle

20°

**Backdriving**

Variable static self-locking  
Quick back-driving in case of vibrations  
Dynamic back-driving