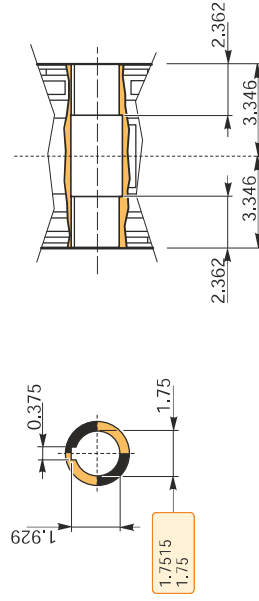
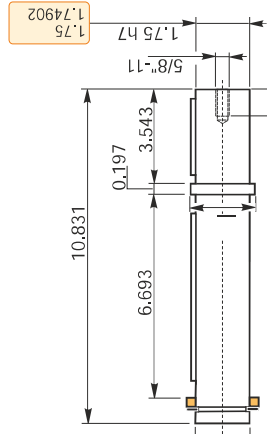
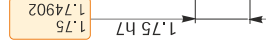
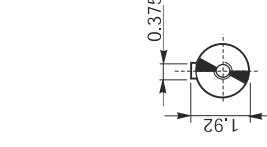
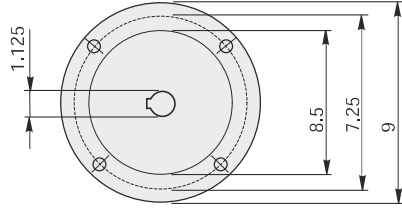
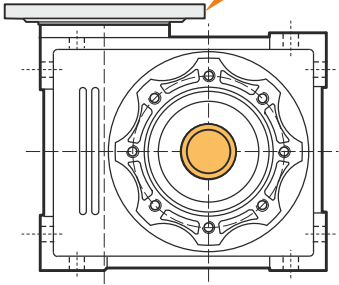
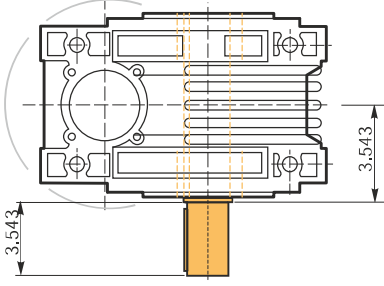
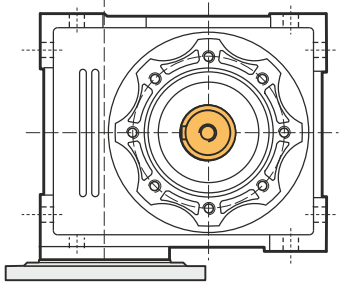


Hollow output shaft





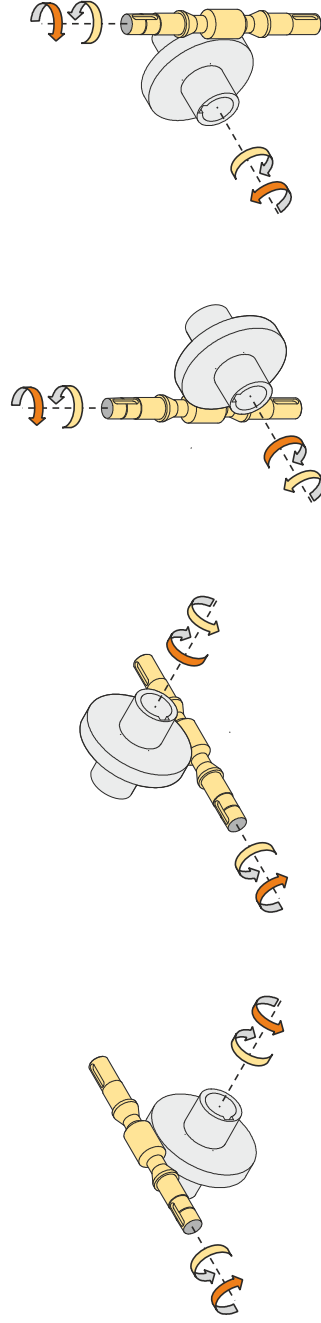
Output shaft is delivered as loose accessory

Mounting positions

Model	Image	Weight [lb]	Oil quantity [quarts]
M1(B3)		3.487	Oil quantity [quarts]
M2(V6)		3.487	
M3(B8)		3.698	
M4(V5)		4.755	
M5(B7)		3.698	
M6(B6)		3.487	

Lubricant type: this gear unit is delivered life lubricated

Direction of rotation



Weight

Gear unit [lb]

99.2

Gearing data

Number of starts
Lead angle
Pressure angle

2
13°47'
20°

Backdriving

Variable static self-locking
Quick back-driving in case of vibrations
Dynamic back-driving